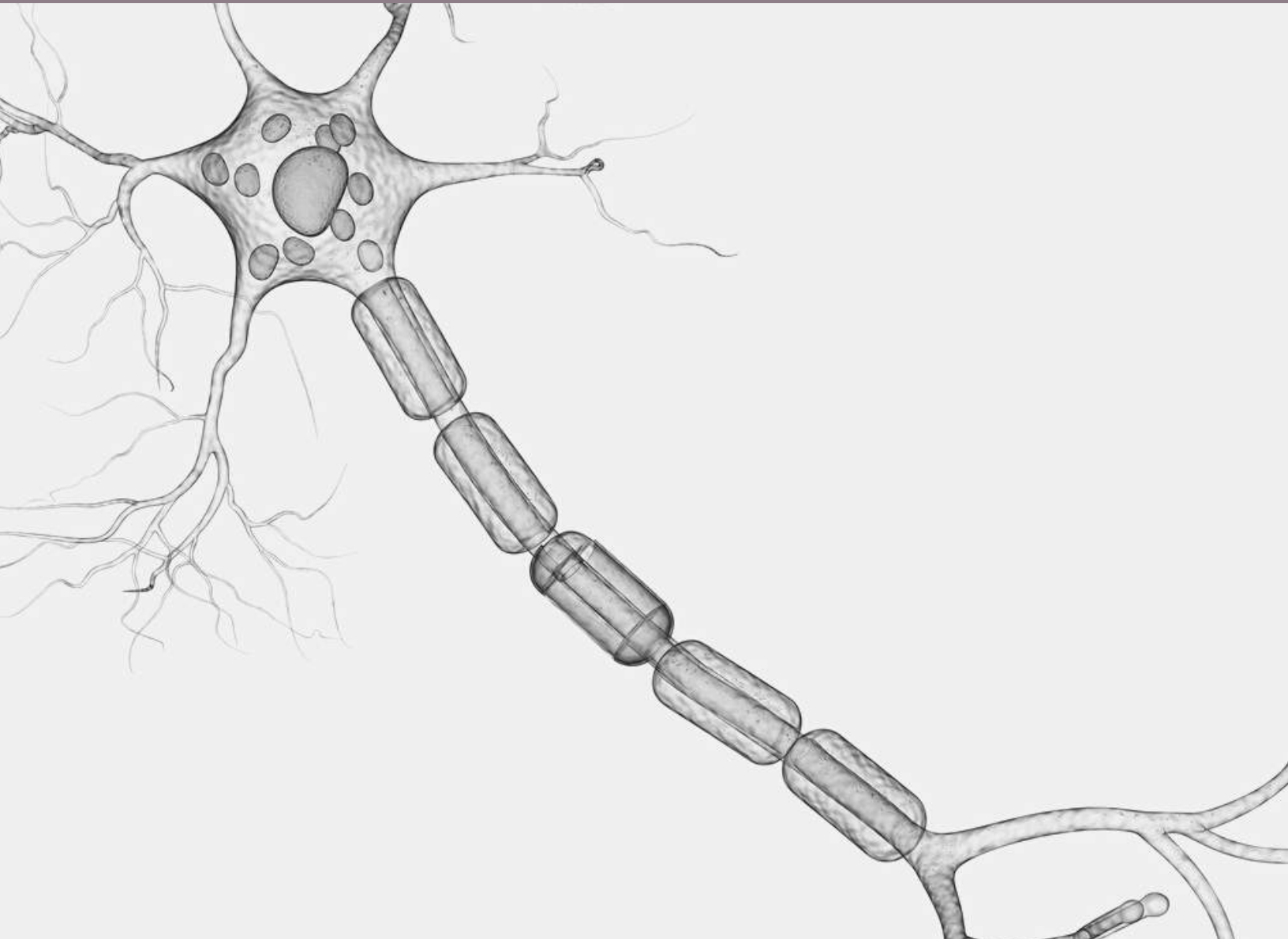


FROM BENCH TO BEDSIDE

Approaches in drug research and development for pain therapies.



INTERNATIONAL PAIN CONFERENCE | MARCH 8-9, 2023



Register at
www.mdbneuro.com
or by scanning the QR
code with your
smartphone camera.

mdbiosciences
research collaborative



FROM BENCH TO BEDSIDE PROGRAM 2023: DAY 1



OPENING SESSION

Wednesday, March 8, 2023

8:15 - 8:30 am

REGISTRATION

8:30 - 9:00 am

WELCOME AND MDB NEURO OVERVIEW

Sigal Meilin PhD | CSO, MD Biosciences. Israel

9:00 - 9:30 am

THE HISTORY OF GÖTTINGEN MINIPIGS

Peter Vestbjerg | Head of International Sales, Ellegaard Gottingen Minipigs. Denmark

9:30 - 10:00 am

THE USE OF GÖTTINGEN MINIPIGS IN BIOMEDICAL RESEARCH

Andres Eskjær Jensen | Scientific team, Ellegaard Gottingen Minipigs. Denmark

10:00 - 10:45 am



COFFEE BREAK

THE USE OF PIGS IN PAIN RESEARCH: FOCUS ON CHRONIC PAIN

Chair: Dr. Sigal Meilin / CSO, MD Biosciences

10:45 - 11:15 am

THE ROLE OF PORCINE MODELS IN TRANSLATIONAL PAIN RESEARCH, WITH A FOCUS ON NEUROPATHIC MODELS

Suzan Meijs, PhD | Assistant Professor, Center for Neuroplasticity and Pain (CNAP), Dept. Of Health Science and Technology, The Faculty of Medicine, Aalborg University. Denmark

11:15 - 11:45 am

ELECTROPHYSIOLOGICAL AND TRANSCRIPTIONAL DISSECTION OF PIG SOMATOSENSORY NEURONS

Hans Jürgen Solinski, PhD | Department of Experimental Pain Research Mannheim Center for Translational Neuroscience, Ruprecht-Karls-University. Heidelberg, Germany

11:45 am - 12:15 pm

PNT MODEL FOR NEUROPATHIC PAIN IN THE PIGS AND SKIN BIOMARKERS

Avital Schauder, PhD | Head of Histology laboratory, MD Biosciences. Israel

12:15 - 1:15 pm



LUNCH

POST-SURGICAL PAIN- TRANSLATIONAL RESEARCH

Chair: Prof. Esther Pogatzki-Zahns

1:15 - 1:45 pm

ADVANCES IN TRANSLATIONAL PAIN RESEARCH RELATED TO ACUTE AND CHRONIC PAIN AFTER SURGERY: PARALLEL EXPERIMENTS IN SPECIFIC RODENT PAIN MODELS, HUMANS AND PATIENTS

Esther Pogatzki-Zahn, Univ. Prof. Dr. Med. | Department of Anesthesiology, Intensive Care and Pain Medicine, University Hospital. Muenster, Germany

1:45 - 2:15 pm

THE ANALGESIC ACTIVITY OF ABOBOTULINUMTOXIN A IN POSTOPERATIVE PAIN MODELS IN THE PIG

Mikhail Kalinichev, PhD | Head of Translational Science, Addex Therapeutics. Switzerland

2:15 - 2:45 pm

THE HTX-001 STORY

Sigal Meilin, PhD | CSO, MD Biosciences. Israel

2:45 - 3:30 pm



COFFEE BREAK

PAINFUL NEUROMA CLINICAL AND PRECLINICAL ASPECTS

Chair: Prof. Shimon Rochkind

3:30 - 4:00 pm

NEUROMAS PATHOPHYSIOLOGIA NERVE REGENERATION AND ANIMAL MODELS

Mark A. Mahan, MD, FAANS | Associate Professor Department of Neurosurgery, University of Utah. USA

4:00 - 4:30 pm

PAINFUL NEUROMA FROM THE CLINIC TO THE ANIMALS, TRYING TO ANSWER A CLINICAL QUESTION USING AN ANIMAL MODEL

Amir Arami, MD | Head of the Hand surgery and Microsurgery department at Sheba Medical Center. Israel

4:30 - 5:00 pm

REVIVING MATRIX FOR RECONSTRUCTION OF TRAUMATIC INJURIES TO THE PERIPHERAL NERVES AND SPINAL CORD

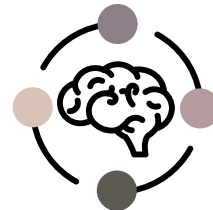
Shimon Rochkind, Director, Prof. Dr. MD/PhD | Peripheral Nerve Reconstruction division of the Department of Neurosurgery, Tel Aviv University, Senior Neurosurgeon and Specialist in Neurosurgery & Microsurgery, Tel Aviv Sourasky Medical Center. Israel

5:00 - 8:00 pm



SOCIAL EVENT AND DINNER

FROM BENCH TO BEDSIDE PROGRAM 2023: DAY 2



CNS RESEARCH CENTER TOUR

Thursday, March 9, 2023

7:15 am

MEET FOR BUS TRANSPORT

8:30 - 9:00 am

FACILITY TOUR

David (Didi) Castel, DVM | Chief Veterinarian Officer, MD Biosciences
Avital Schauder, PhD | Head of Histopathology Department, MD Biosciences
Sigal Meilin, PhD | CSO, MD Biosciences

9:00 - 9:45 am



COFFEE BREAK

RESOLVING PAIN- DIFFERENT APPROACH TO PAIN THERAPY

Chair: Matan Nachliely, MD Biosciences Israel

9:45 - 10:15 am

ADS012, A NOVEL NON-COLONIZING ORALLY DELIVERED SINGLE STRAIN LIVE BIOTHERAPEUTIC PRODUCT (SS-LBP) FOR THE TREATMENT OF NEUROINFLAMMATORY DISEASES

Laurent Chesnel, PhD | VP Research and Development, Adosi Therapeutics. USA

10:15 - 10:45 am

EXERCISE PREHABILITATION AND IMMUNE REGULATION IN NEUROPATHIC PAIN

Peter M Grace, PhD | Associate Professor and Chair ad interim, Department
of Symptom Research Laboratories of Neuroimmunology, MD Anderson
Cancer Center. Houston, TX, USA

10:45 - 11:15 am



COFFEE BREAK

VIEW ON PAIN BIOMARKERS

Chair: Avital Schauder, MD Biosciences Israel

11:15 - 11:45 am

IN VIVO ELECTROPHYSIOLOGY A BIOMARKER FOR PAIN

Yoav Shulman, PhD | Neurophysiology, MD Biosciences. Israel

11:45 am - 12:15 pm

GABAPENTIN TREATMENT ATTENUATES INFLAMMATORY MARKERS IN STZ INDUCED NEUROPATHIC PAIN

Sigal Meilin, PhD | CSO, MD Biosciences. Israel

CLOSING REMARKS (Boxed lunch available to go)

Location and Travel

In the heart of the beautiful Mediterranean, Israel has a thriving life science and MedTech sector. Compared with the rest of the world, Israel spends the highest percentage of GDP on research and development. Make it a long weekend and enjoy a sunny start to spring with temperatures between 65-72°F/15-22°C in early March.



HOTEL

Leonardo Boutique Rehovot Hotel
2 Oppenheimer St, Rehovot, Israel
Room Rates (valid until Feb 8, 2023):
Single 580 NIS | Double 660 NIS



AIR TRAVEL

International flights arrive in Ben Gurion airport, which is approximately a 30 minute drive to the hotel.



LOCAL TRANSPORTATION

The Leonardo Boutique is just a few steps from Rehovot Ehud Hadar Train Station. A bus to the conference center will wait in front of the hotel at 7:45 am for the hotel guests and participants that are arriving by train. At the end of the day (approx. 20:00) a bus will return the participants to the hotel/train station.



CONFERENCE CENTER

Beit Ha Pnay, Cultural Center
Moshe Levi St 6, Ness Ziona
There is a free parking place in front of the center. The conference center is located 4 km (2.5 miles) from the Hotel.

For hotel reservation, please send an email to Execlub@fattal.co.il with the following details:

One night, March 08

Leonardo Boutique Rehovot Hotel

Order number: 116031

Room Type:

Single (NIS) 580

Double (NIS) 660

Payment is directly at the hotel upon arrival.